

FREEHOLD



Bungalow - Semi Detached

## 2 BEDROOM BUNGALOW IN WARWICK AVENUE

Asking Price

**£650,000**

FEATURES



**SPACE**  
RESIDENTIAL

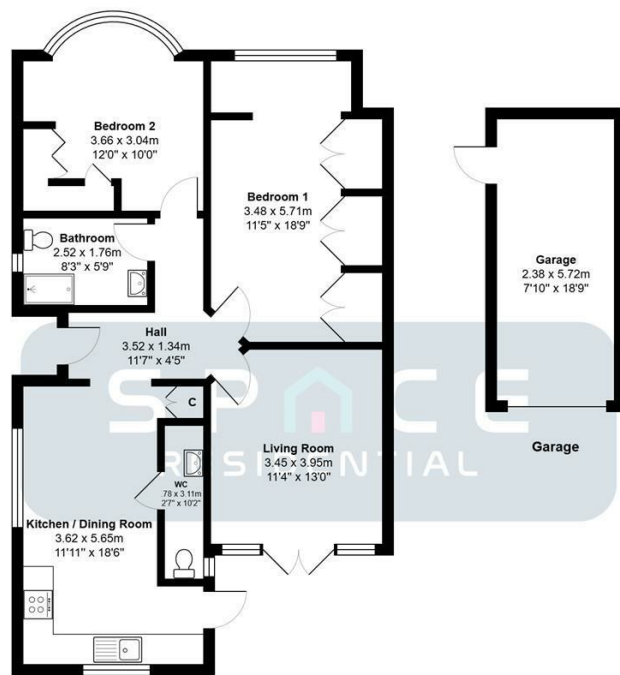
# 2 Bedroom Bungalow - Semi Detached located in Edgware

Space Residential are pleased to present this lovely 2 Bedroom Bungalow, located in a prime location in a peaceful neighbourhood, but within walking distance of the local shops on Glengall Road Edgware.

The layout internally has been sensibly designed by the current owner and upon entering the bungalow you are greeted by a large hallway, a door leads to a bright rear facing living room with double doors going out into the garden. The kitchen/breakfast room has been extended to provide an eating area within a modern fitted kitchen. There is a door leading to the Guest W.C/utility room.

There are 2 spacious double bedrooms, with the larger of boasting a run of fully fitted wardrobes stretching across the back wall.

The bathroom is modern and has a shower cubicle, W.C. and sink.



Ground Floor

Total Area: 93.4 m<sup>2</sup> ... 1005 ft<sup>2</sup>  
All measurements are approximate and for display purposes only

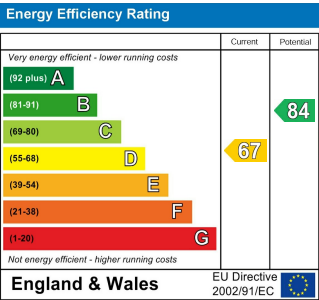
Call us on

0208 906 2222

info@spaceresidential.com  
spaceresidential.com

Council Tax Band

E



Agents Note: Whilst every care has been taken to prepare these particulars, they are for guidance purposes only. All measurements are approximate and are for general guidance purposes only and whilst every care has been taken to ensure their accuracy, they should not be relied upon and potential buyers are advised to recheck the measurements.

